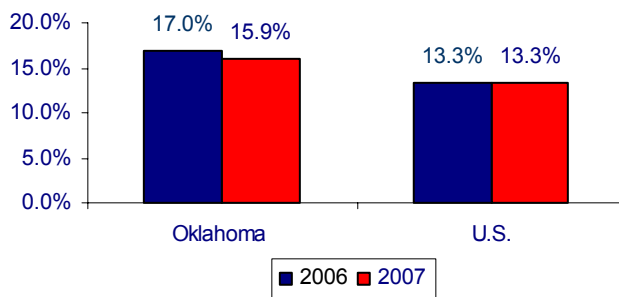


## OKLAHOMA'S POVERTY PROFILE: 2007

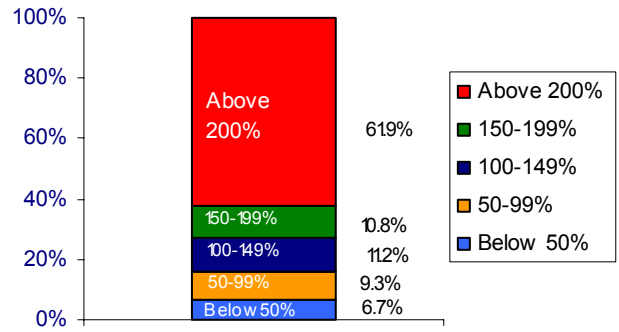
On August 28th, 2008, the US Census Bureau released new state-level data from the American Community Survey on poverty in 2007. The report's major findings included the following:

- Nearly one in six Oklahomans (15.9%) lived in poverty in 2007. This is a 1.1 percentage point decrease from 2006 but well above the poverty rate of 2000 at the peak of the last economic expansion (13.8%). Oklahoma's poverty rate is 2.6 percentage points higher than the national average (Fig. 1). The poverty level in 2007 was \$20,650 for a family of four.
- Nearly two in five Oklahomans (39.1%) live at or below twice the federal poverty level. 6.7% of the population lives in extreme poverty, with income at or below 50% of the poverty level (Fig. 2).

**Fig 1: Poverty Rate, Total Population, Oklahoma and U.S., 2006 and 2007**

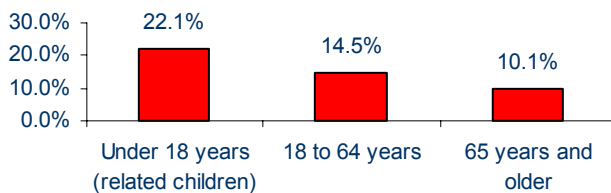


**Fig. 2: Oklahomans by Percent of Poverty Level, 2007**

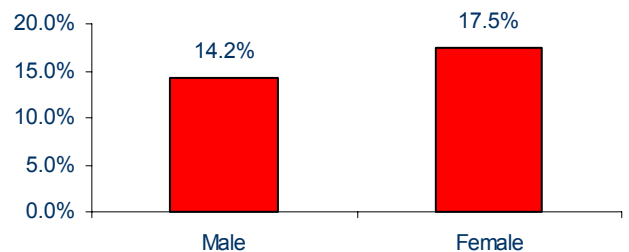


- The poverty rate for children (22.1%) is higher than that of working-age adults (14.5%) or seniors (10.1%) (Fig. 3).
- The poverty rate for women (17.5%) is three percentage points higher than the rate for men (14.2%) (Fig. 4).

**Fig. 3: Poverty Rate by Age, Oklahoma 2007**

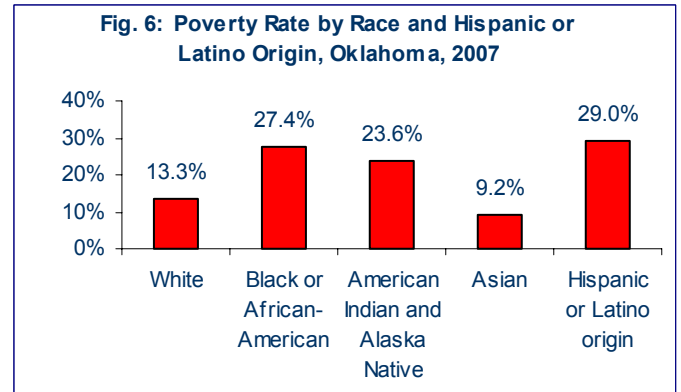
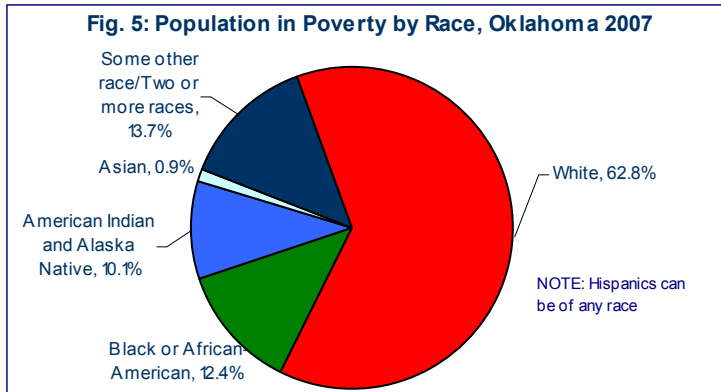


**Fig 4: Poverty Rate by Sex, Oklahoma, 2007**

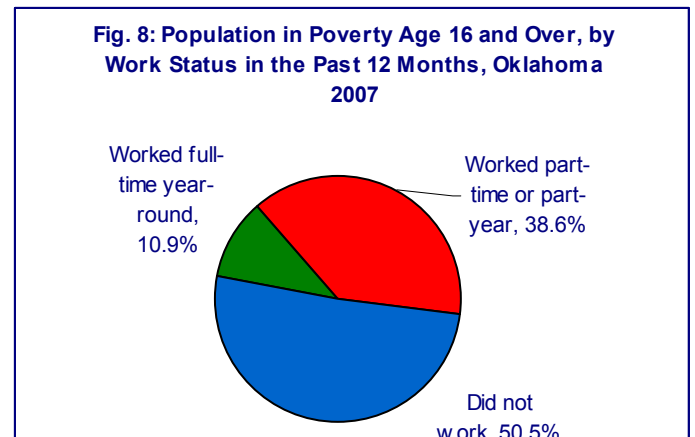
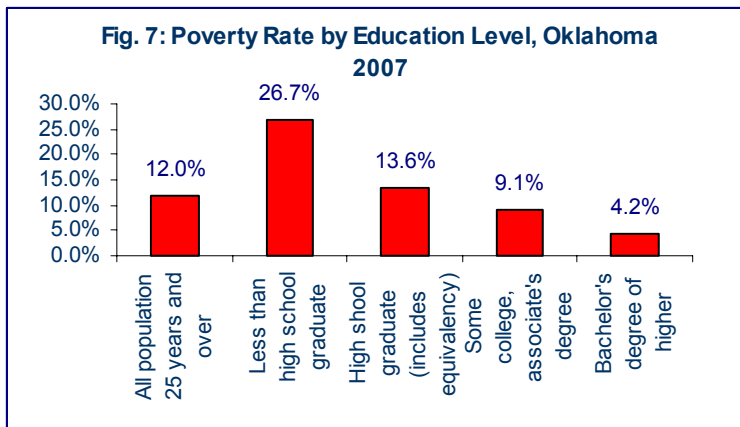


Source: All data from American Community Survey, 2007, U.S. Census Bureau at [www.uscensus.gov](http://www.uscensus.gov)

- A majority (62.8%) of Oklahomans in poverty are White (Fig. 5);
- Within Oklahoma, Hispanics (29.0%), African-Americans (27.4%), and Native Americans (23.6%) have the highest rates of poverty (Fig. 6).



- Poverty is closely correlated with education— a college graduate is only one-third as likely to live in poverty as someone with only a high school degree, and one-sixth as likely to be in poverty as someone with less than high school graduation (Fig. 7). One-third of poor Oklahomans over age 25 (32.7%) did not graduate high school.
- Among working-age adults living in poverty, slightly less than half worked at least part-time or part-year in 2007. The other half of adults in poverty did not work at all in 2007 (Fig. 8).



- Families headed by single mothers have a poverty rate nearly five times as high as married-couple families (Fig. 9).

