

DEMOGRAPHICS



POPULATION
11,087 (55th)



MEDIAN AGE
40.1 (35th)

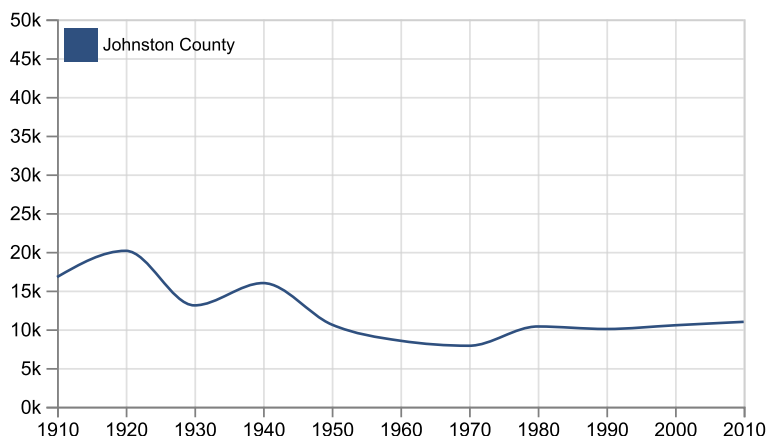


PERCENT UNDER 18
24% (36th)



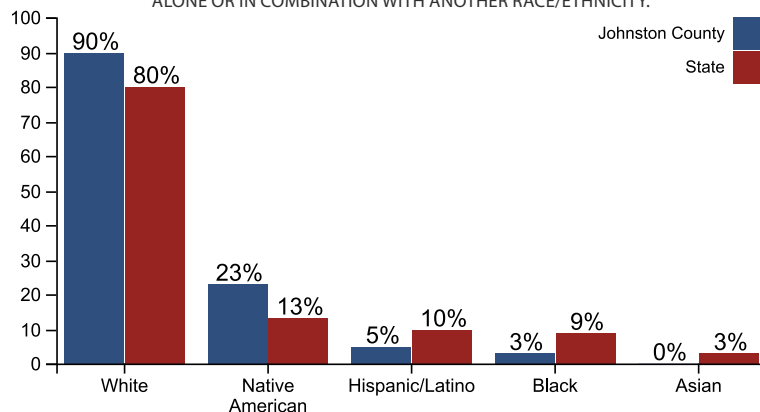
PERCENT 65 & UP
18% (32nd)

POPULATION TREND



RACE & ETHNICITY

PERCENTAGES INCLUDE PEOPLE IDENTIFYING AS ONE RACE/ETHNICITY ALONE OR IN COMBINATION WITH ANOTHER RACE/ETHNICITY.



EDUCATION



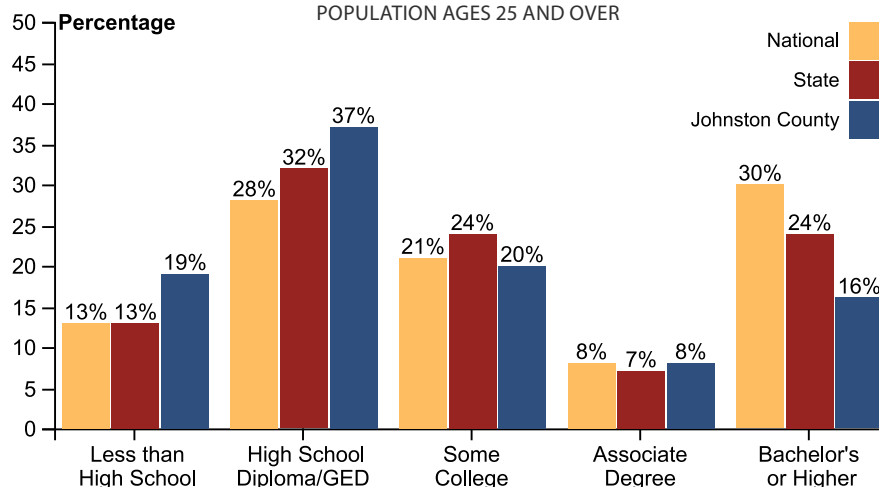
STUDENTS ELIGIBLE FOR FREE/REDUCED PRICE LUNCH
78% (9th)



STUDENTS ENROLLED IN PUBLIC SCHOOL
1,950 (56th)

EDUCATIONAL ATTAINMENT

POPULATION AGES 25 AND OVER



HEALTH



OVERALL HEALTH RANK
68TH



RESIDENTS WITH A DISABILITY
26% (3rd)



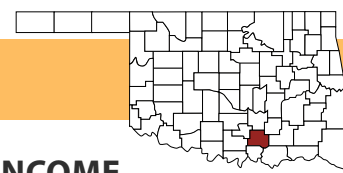
ADULTS WITH OBESITY
39% (3rd)



UNINSURED RESIDENTS
21% (22nd)

For all measures, a rank of 1st indicates highest and 77th indicates lowest (not best or worst). All data is the most recent available at time of publication, ranging from 2015 to 2017. For more county level data and source information, visit www.okpolicy.org/countystats.

ECONOMY



**MEDIAN HOUSE-
HOLD INCOME**
\$38,080 (59th)



**RESIDENTS WITH
FOOD STAMPS**
29% (20th)



**MEDIAN VALUE
OCCUPIED HOMES**
\$76,600 (65th)

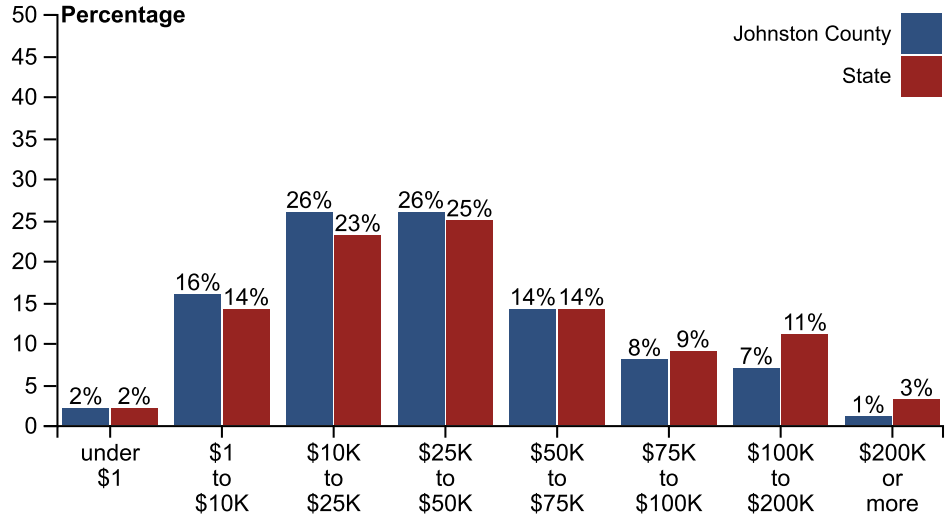


**CHILDREN UNDER
POVERTY LINE**
30% (20th)

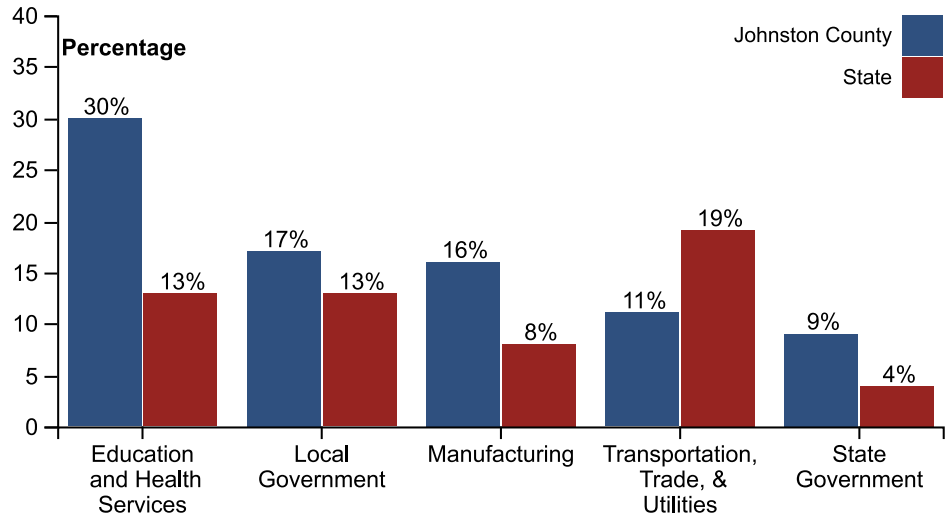


**RESIDENTS UNDER
POVERTY LINE**
22% (15th)

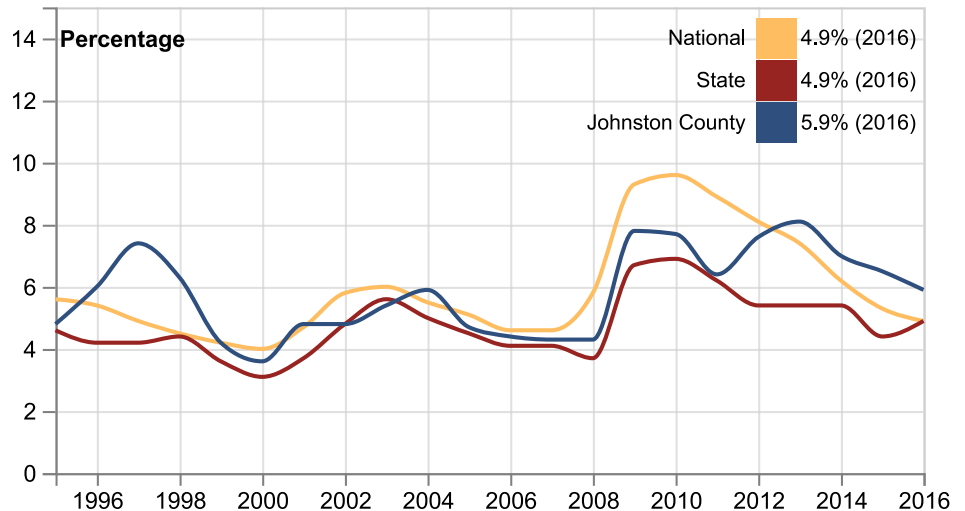
HOUSEHOLD ADJUSTED GROSS INCOME



TOP 5 EMPLOYMENT SECTORS



UNEMPLOYMENT



For all measures, a rank of 1st indicates highest and 77th indicates lowest (not best or worst).
All data is the most recent available at time of publication, ranging from 2015 to 2017.
For more county level data and source information, visit www.okpolicy.org/countystats.